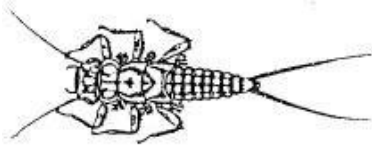


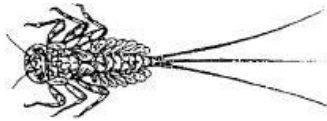
# Zeigerorganismen



## Güteklasse I-II Saprobienindex 1,0 - <1,8



Steinfliegenlarve



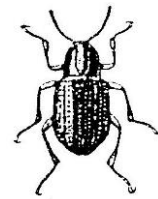
Flache Eintagsfliege



Dreieckskopfstrudelwurm

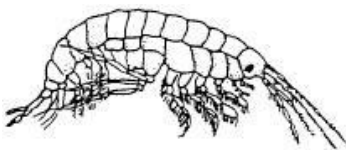


Köcherfliegenlarve

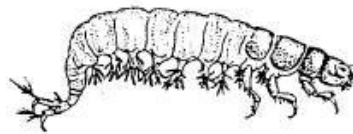


Hakenkäfer

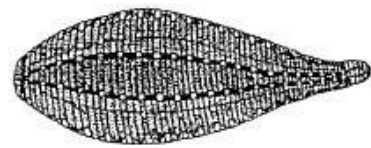
## Güteklasse II Saprobienindex 1,8 - <2,3



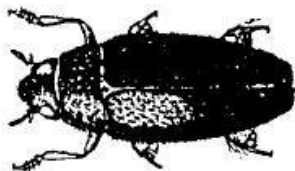
Bachflohkrebs



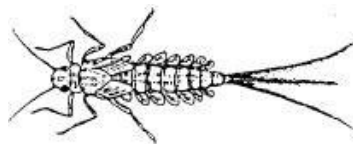
Köcherfliegenlarve ohne Köcher



Großer Schneckenegel



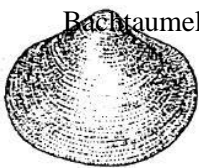
Bachtaumelkäfer



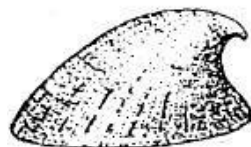
Runde Eintagsfliegenlarve



Gemeiner Fischegel



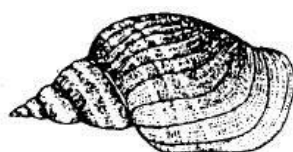
Kugelmuschel



Flußnapfschnecke



Erbsenmuschel



Spitzschlammschnecke



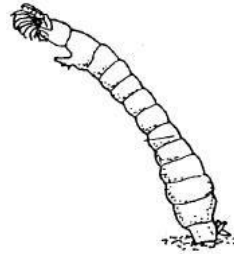
Posthornschncke

## Ermittlung der Gewässerklasse

Güteklasse II - III  
Saprobienindex 2,3 - <2,7



Kriebelmückenlarve

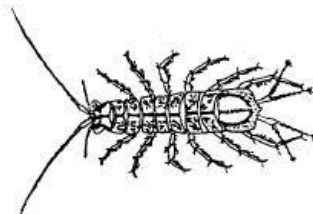


Schlemmfliegenlarve

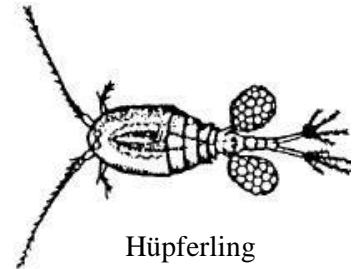
Güteklasse III-IV  
Saprobienindex 2,7- <3,5



Rollegel



Wasserassel

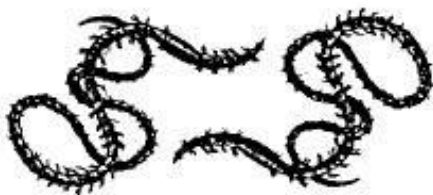


Hüpfertling



Rote Zuckmückenlarve

Güteklasse IV/Saprobienindex 3,5 - <4,0



Schlammröhrenwurm



Rattenschwanzlarve